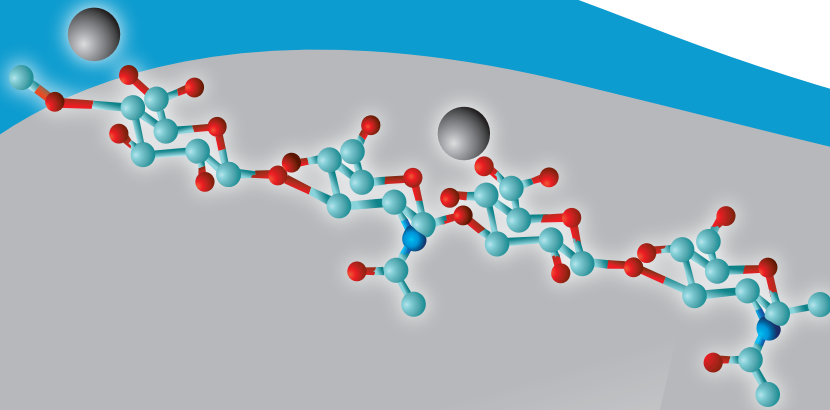


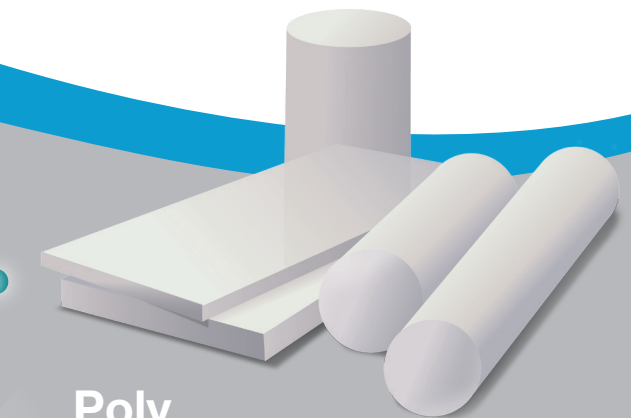
# BioPoly™ RS

## Knee System

Femoral condyle partial resurfacing device made from a microcomposite of Hyaluronic Acid and UHMWPE



**Bio**  
Hyaluronic Acid



**Poly**  
UHMWPE



**BioPoly™**

Hydrophilic polymer provides a smooth and lubricious surface to interact favorably with native joint tissues and carry anatomical loads

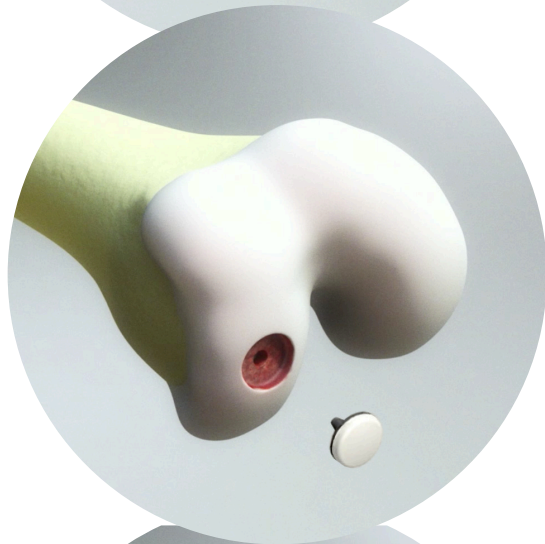
Advancing Materials. Advancing Outcomes.™

# BioPoly RS Knee Implant

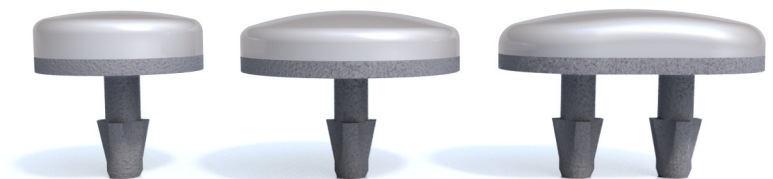
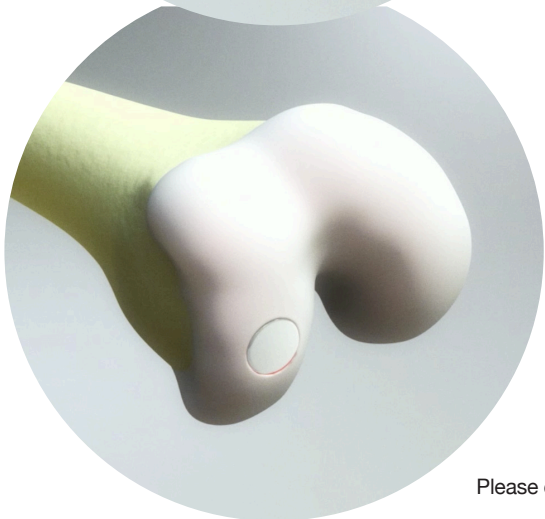


Patient presents with a painful cartilage lesion of the femoral condyle.

- Arthroscopic assisted implantation is quick and straightforward.
- Joint disruption is minimized.
- Anatomy is preserved.
- Unique implant design and construction restores articulating surface.
- Patient rapidly recovers and returns to activity.



Reference No.	Description
115-5002	BioPoly 15mm Partial Resurfacing Knee Implant
115-5003	BioPoly 20mm Partial Resurfacing Knee Implant
115-5004	BioPoly 15x24mm Partial Resurfacing Knee Implant
115-5500	Instrument Kit



BioPoly™ RS device is implanted utilizing a reusable instrument kit. Please contact a BioPoly, LLC representative to learn more about the benefits of the BioPoly RS Knee System. [Sales@BioPolyortho.com](mailto:Sales@BioPolyortho.com)

